



## Custom example



## Description

Outdoor flex is the smart and flexible combination between a cabin and an outdoor. This solution eliminates all the problems associated with the establishment and service of outdoor technical rooms. The cabinet is constructed of 60 mm. PUR foam insulated building panels, which makes them easy to handle and adjust individually.

As the name indicates, Outdoor Flex is extremely flexible. The solution consists of a base module which is available in two standard heights (160-220 cm.). The cabinet can then be modified and adapted in size and exterior as well as interior design, to meet the requirements that may be for a specific business case.

## Accessories

There is a wide range of accessories suited for the Outdoor Flex cabinets. These make it possible to achieve a high degree of customization, both on the inside as well as on the outside of the cabinet. Check out our accessories and select the ones that creates the Outdoor Flex that fits your needs and desire.



## Custom example



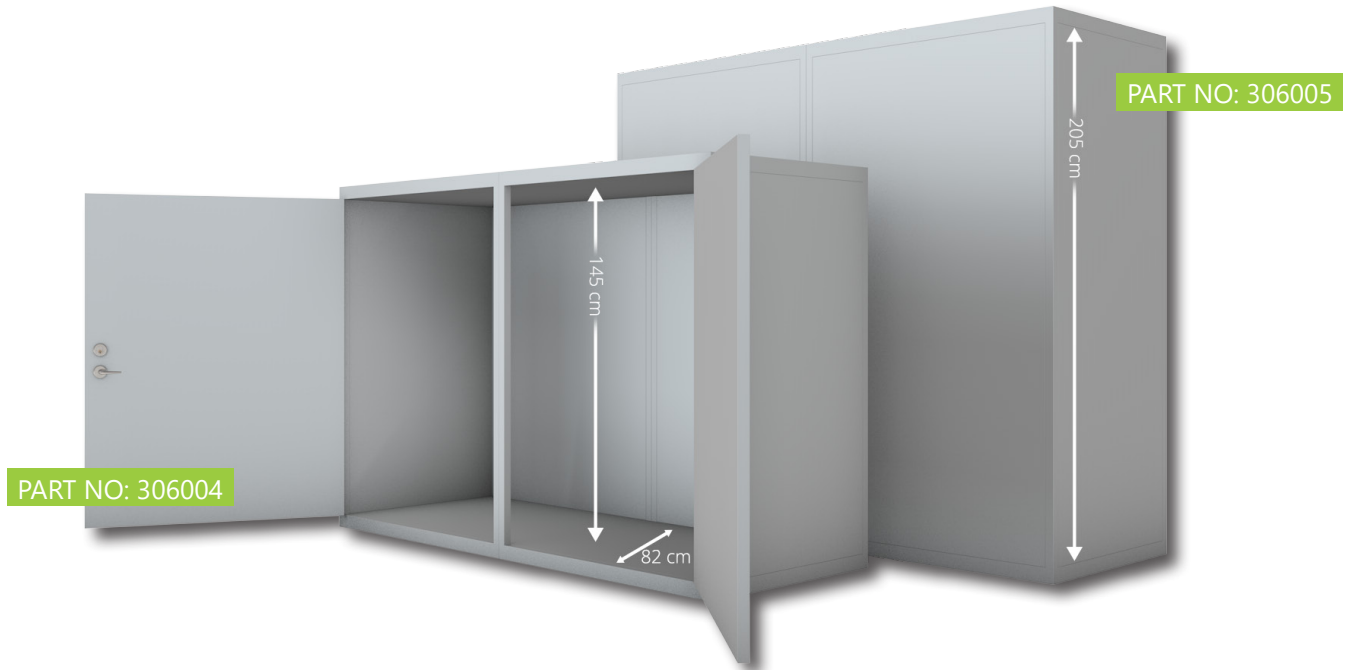
## Description

Outdoor flex is the smart and flexible combination between a cabin and an outdoor. This solution eliminates all the problems associated with the establishment and service of outdoor technical rooms. The cabinet is constructed of 60 mm. PUR foam insulated building panels, which makes them easy to handle and adjust individually.

As the name indicates, Outdoor Flex is extremely flexible. The solution consists of a base module which is available in two standard heights (160-220 cm.). The cabinet can then be modified and adapted in size and exterior as well as interior design, to meet the requirements that may be for a specific business case.

## Accessories

There is a wide range of accessories suited for the Outdoor Flex cabinets. These make it possible to achieve a high degree of customization, both on the inside as well as on the outside of the cabinet. Check out our accessories and select the ones that creates the Outdoor Flex that fits your needs and desire.



## Custom example



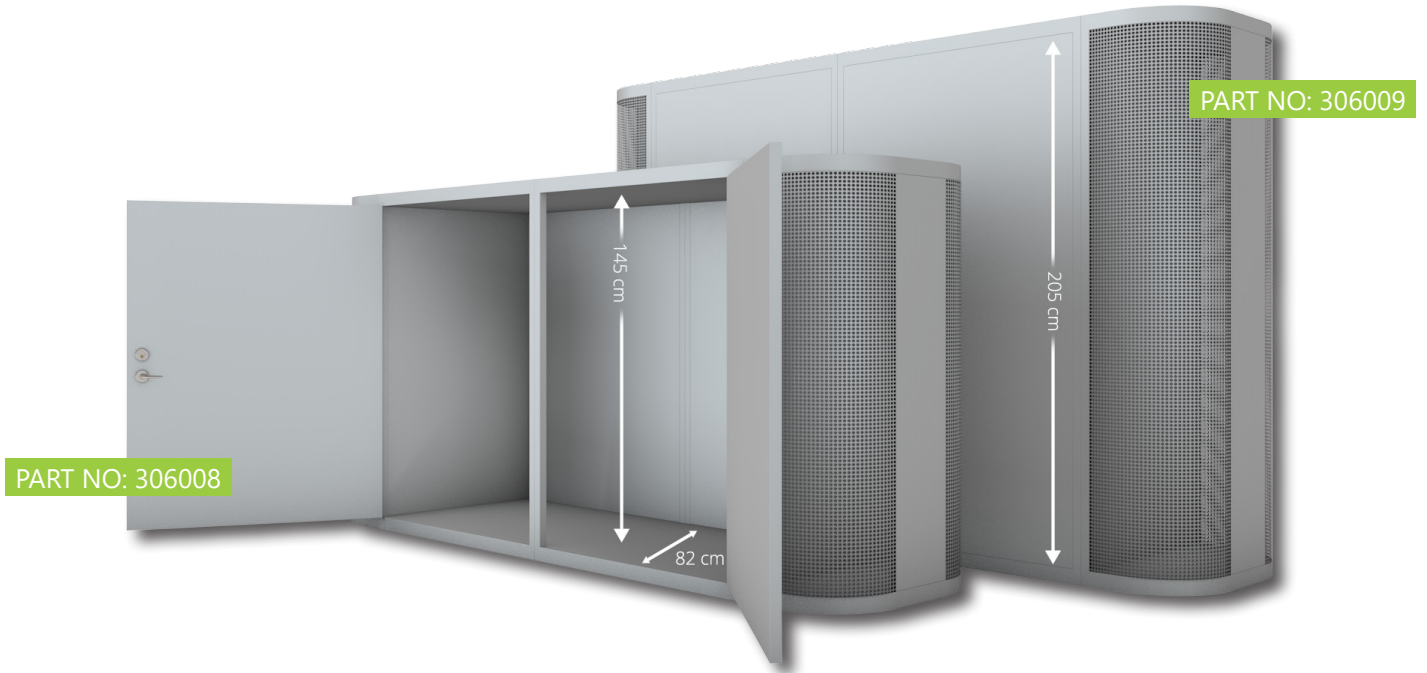
## Description

Outdoor flex is the smart and flexible combination between a cabin and an outdoor. This solution eliminates all the problems associated with the establishment and service of outdoor technical rooms. The cabinet is constructed of 60 mm. PUR foam insulated building panels, which makes them easy to handle and adjust individually.

As the name indicates, Outdoor Flex is extremely flexible. The solution consists of a base module which is available in two standard heights (160-220 cm.). The cabinet can then be modified and adapted in size and exterior as well as interior design, to meet the requirements that may be for a specific business case.

## Accessories

There is a wide range of accessories suited for the Outdoor Flex cabinets. These make it possible to achieve a high degree of customization, both on the inside as well as on the outside of the cabinet. Check out our accessories and select the ones that creates the Outdoor Flex that fits your needs and desire.



## Custom example



## Description

Outdoor flex is the smart and flexible combination between a cabin and an outdoor. This solution eliminates all the problems associated with the establishment and service of outdoor technical rooms. The cabinet is constructed of 60 mm. PUR foam insulated building panels, which makes them easy to handle and adjust individually.

As the name indicates, Outdoor Flex is extremely flexible. The solution consists of a base module which is available in two standard heights (160-220 cm.). The cabinet can then be modified and adapted in size and exterior as well as interior design, to meet the requirements that may be for a specific business case.

## Accessories

There is a wide range of accessories suited for the Outdoor Flex cabinets. These make it possible to achieve a high degree of customization, both on the inside as well as on the outside of the cabinet. Check out our accessories and select the ones that creates the Outdoor Flex that fits your needs and desire.

# ACCESSORIES - OUTDOOR FLEX



**PART NO. 61033**

Coating of assembled cabinet in standard RAL colors



**PART NO. 61034**

Camouflage foil fitted on the assembled cabinet



**PART NO. 61040**

Complete ventilation kit with air filter for installation in cabinet  
Excl. controller



**PART NO. 61041**

Controller S  
Small version controller incl. sensors



**PART NO. 61042**

Controller M  
Full communication incl. sensors



**PART NO. 61043**

Sound attenuation kit for mounting in end module in front of air intake



**PART NO. 61044**

Digital filter guard, fitted



**PART NO. 61045**

Fitted external thermostat. Temperature reading from 5 to 60 degrees



**PART NO. 61046**

Fitted pressure relief damper incl. 48 VDC actuator and electric wire



**PART NO. 61047**

Sound proofed ventilation cap



**PART NO. 61050**

48 VDC or 230 VAC LED light kit. with door switch. Incl. door open-alarm



**PART NO. 61051**

Fitted door switch for light and door open-alarm, 1 x NC & 1 x NO contact



**PART NO. 61052**

Fitted 230 V halogen lamp with sensor and cable for connection



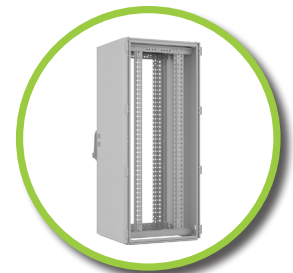
**PART NO. 61053**

Potential equalization rail 309, delivered unattached in cabinet



**PART NO. 61054**

Cable tray, 2 m. for mounting of cables on wall



**PART NO. 61055**

19" rack, in any standard configuration

# ACCESSORIES - OUTDOOR FLEX



**PART NO. 61056**

Rack mounted panel-board, type A



**PART NO. 61057**

Rack mounted panel-board, type B



**PART NO. 61058**

Extractable rain cover. Mounted in the door opening of the basic module



**PART NO. 61059**

PC table, rack mounted



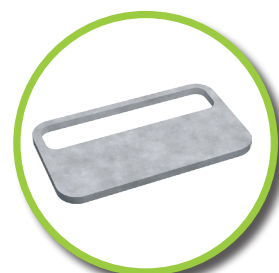
**PART NO. 61060**

PC table, door mounted



**PART NO. 6106-**

ROXTEC comseal incl. PUR hedging. Available in any standard configuration



**PART NO. 61070**

Concrete plinth (Indicative picture)



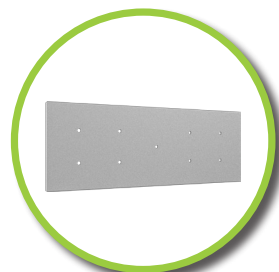
**PART NO. 6107-**

Galvanized plinth, type 1,2,3,4 (indicative picture)



**PART NO. 61075**

Plugin Aircondition 5 kW



**PART NO. 200028**

Hedging for bottom frame



**PART NO. 200064**

High end arch



**PART NO. 200080**

High end arch, prepared for electrical switchboard



**PART NO. 200065**

Low end arch



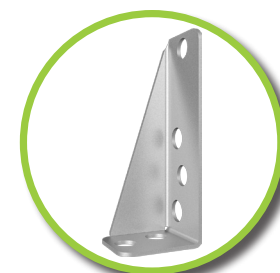
**PART NO. 20081**

Low end arch, prepared for electrical switchboard



**PART NO. 84657**

Angular bracket against concrete



**PART NO. 84658**

Angular bracket

# ACCESSORIES- OUTDOOR FLEX



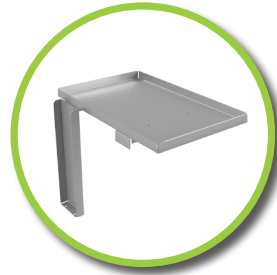
**PART NO. 84663**

Bracket between bottom frame and cabinet



**PART NO. 028009**

Meter cabinet



**PART NO. 21108**

Battery shelf